



Bristol Marine Ltd.

**ABYC Regatta
Ashbridge's Bay Yacht Club
May 26-27, 2012
Sailing Instructions**

Including amendment #1 which corrects dates in SI 3 and SI 5, and changes the overall time limit for J-24 races from 2 hours to 90 minutes.

The Lake Ontario Racing Council (LORC) and Ashbridge's Bay Yacht Club (ABYC) are the organizing authority for this regatta.

1 RULES

- 1.1 This regatta will be governed by the 'rules' as defined in the Racing Rules of Sailing. The prescriptions of the Canadian National Authority, CYA, will apply. A copy of the CYA prescriptions will be posted on the official notice board. The CYA prescriptions may also be found at www.sailing.ca/files/racing/rules/CYAPrescriptions2009-12.pdf
- 1.2 For IRC, the IRC 2012 rules parts A,B,and C will apply.
- 1.3 For protests involving an infringement of a rule of *part 2* or *rule 31* of the RRS, a mediation hearing may be held. (See SI 17).
- 1.4 This regatta is a level B for Crew Eligibility for the Beneteau First 36.7 Class (ISAF Regulation 22).
- 1.5 **The J/24 class will sail under the J/24 Ontario District Standard Sailing Instructions. They are available at <http://www.j24can.com/ontario/files/J24StandardSI.pdf> . Appendix A to the J/24 Ontario District Standard Sailing Instructions can be found at the end of this document.**
- 1.6 In case of differences between the Notice of Race and the Sailing Instructions, the Sailing Instructions will apply.

2 NOTICES TO COMPETITORS

2.1 Notices to competitors will be posted on the official notice board(s) located on the upper floor of the Clubhouse.

3 CHANGES TO SAILING INSTRUCTIONS

3.1 Changes to the Sailing Instructions affecting the first day of racing will be posted on the Ashbridge's Bay Yacht Club website at http://abyc.on.ca/?page_id=1178 by 1600 Friday May 25. Changes to the Sailing Instructions affecting the second day of racing will be posted on the official bulletin board and on the ABYC website by 2000 on Saturday May 26. It is the responsibility of each boat to check the website prior to racing. This changes rule 60.1 (b).

4 SIGNALS MADE ASHORE

4.1 Signals made ashore will be displayed at the flagpole to the west of the Clubhouse.

5 ENTRY

5.1 Registration for this regatta is through the LORC online registration system (www.lorc.org). Late registrations for this regatta may be accepted. No paper registrations will be accepted at ABYC. The race committee may make a computer available for late registration at ABYC between 0830 and 0930 Saturday May 26.

5.2 Registrations made after 0930 Saturday May 26 may be refused.

6 CLASS ASSIGNMENTS TO COURSES, DIVISION SPLITS, AND DIVISION IDENTIFICATION FLAGS

6.1 Information on the course assignment for each class or division can be found in the attachment indicated in the table below.

6.2 Boats in handicap divisions shall fly the identifying flag shown in the table from the backstay. Flags will be of non-fading material, a minimum of 8" x 12" and shall be flown visibly above the stern rail. Where two colours describe flags, the order of colours will be located diagonally from top of fly to bottom of hoist, with the first named colour above the other at the hoist. The Protest Committee may impose a lesser penalty than disqualification for breach of this instruction.

Classes	Attachment	Rating Band	Backstay Flag
IRC-1	A	1.046 and higher	Black
IRC-2	A	1.000 – 1.045	Orange
8 Metre	A		
Beneteau 36.7	B		
C&C 99	B		
J/105	B		
J/24	C		
Thunderbird	C		
IRC-3	D	0.925 – 0.999	Blue
IRC-4	D	0.924 and lower	Green
Etchell	D		
Viper 640	D		
Martin 16	E		

6.3 The organizing authority reserves the right to keep like boats together, even if this action overrides one or more boat's separation by rating. The boat shall continue to use her actual rating for all purposes, except to sail in the assigned class.

7 SCHEDULE

- 7.1 All classes will race both Saturday May 26 and Sunday May 27.
- 7.2 The scheduled time of the warning signal for the first race of each day is 10:50, except that for the J-24 class the first warning signal on Saturday will be at 1230.
- 7.3 Except for the J-24 class, no starting sequence will commence after 1530. For details of the schedule for J-24s and Thunderbirds, see Attachment C and Appendix A to the J-24 Ontario District Sailing Instructions.
- 7.4 See attachments A to E for the maximum number of races for each course.

8 RACING AREAS, THE COURSES, MARKS

- 8.1 See the applicable attachment for the course.

9 THE START

- 9.1 Each boat intending to race shall, before its first race on each day, come within hailing distance of the Race Committee vessel, either before the warning signal for the first Class in the first race or immediately after its Class warning signal, and shall report its sail number and receive acknowledgement. Boats attempting to signal their intent to race shall still keep clear of the Starting Area as required by **SI 9.3**. The Race Committee will not accept reports of intent to start via VHF radio. The Race Committee may protest boats failing to report. The Protest Committee may impose a lesser penalty than disqualification for breach of this instruction.
- 9.2 The starting line will be between the halyard carrying the orange flag on the Race Committee vessel and the start mark as described in the applicable attachment.
- 9.3 After the first warning signal for a race and prior to her warning signal, a boat shall keep clear of the starting area that extends the length of the starting line ahead of and behind the starting line. It shall also extend one-half the length of the starting line past either end of the starting line. The Protest Committee may make the disqualification DNE for a breach of this instruction. This amends RRS 64.1.
- 9.4 A mark may be laid inside or near one end of the line (a "distance mark") in which case, boats shall not pass between that mark and the Race Committee vessel at any time.
- 9.5 A boat starting later than nine (9) minutes after her starting signal will be scored Did Not Start. This changes Rule A5.
- 9.6 Individual recalls will comply with Rule 29.1. The Race Committee may announce via the applicable VHF Channel the sail number or boat name of each premature starter. The failure to announce or the order in which boats are announced shall not be grounds for redress. This changes Rule 60.1 (b).

10 CHANGE OF THE NEXT LEG OF THE COURSE DURING A RACE

- 10.1 Rule 33 (b) is replaced by "If the length will be changed, the signal shall be the display of flag C with repetitive sounds and the new length(s) of the new leg(s)".
- 10.2 To change the next leg of the course, the race committee will lay a new mark (or move the finishing line) and remove the original mark as soon as practicable. When in a subsequent change of course a new mark is replaced, it will be replaced with an original mark.

11 CHANGE OF COURSE BETWEEN STARTS

- 11.1 If there is a sufficient wind shift during a series of start sequences, the race committee may draw attention to a course change for a class which has yet to start by displaying code flag C at or before the warning signal until after the starting signal. Code flag C will not be accompanied by a sound signal. This changes *race signal C*.
- 11.2 When SI 11.1 applies, marks 1 and 2 will be considered "new marks" as in SI 10.2.

12 WARNING SIGNALS FOR SUBSEQUENT RACES

- 12.1 When more than 10 minutes has elapsed from the starting signal for the previous race, the race committee will sound several short sound signals and announce the upcoming warning signal on the applicable VHF Channel approximately one minute before the upcoming warning signal.

13 THE FINISH

- 13.1 Boats will finish between the halyard carrying the Orange Shape or Flag on the Race Committee vessel and the final mark of the course as per the course diagram in the applicable attachment.
- 13.2 If the Race Committee does not plan to run any more races it will fly Code Flag "H" at the finish. If the Race Committee flies Code Flag "H" over a class flag, there will be no more races for that class.

14 PENALTY SYSTEM

- 14.1 A boat that has taken a penalty or retired under *rule 44.1* shall notify the race committee after it has finished or retired.
- 14.2 A boat that may have broken a rule of Part 2 or rule 31 may take a penalty after racing but prior to a protest hearing. Her penalty shall be a scoring penalty of 40% as calculated according to rule (44.3 (c) or 50% of the difference between her position and the number of entries, whichever is less. This changes rule 44.1.

15 TIME LIMITS

- 15.1 A time limit of 30 minutes after the first boat to finish in each class will apply. Boats failing to finish by the time limit for their class will be scored DNF. This changes Rules 35 and A5.
- 15.2 Boats not finished racing by 1715 (Eastern Daylight Time) will be scored DNF. This changes Rules 35 and A5.

16 PROTESTS AND REQUESTS FOR REDRESS

- 16.1 Boats which intend to file a protest are requested to notify the Race Committee by VHF radio immediately after finishing or retiring.
- 16.2 Protest forms are available from ABYC at the protest desk located on the lower floor of the Clubhouse.
- 16.3 Protests shall be lodged in writing at the ABYC protest desk within one and one half hours of: a) the time of the last boat to finish the last race of the day on the protesting boat's course, or b) expiry of the time limit if that terminated the last race of the day, or c) abandonment of racing for the day on the protesting boat's course, whichever is applicable.
- 16.4 Notice of protests to be heard will be posted on the Official Notice Board within 30 minutes of the end of protest time. This serves as notice as required by rule 63.2.
- 16.5 Breach of class or handicap rules will be allowed as grounds for protest provided the protestor submits an official copy of said one-design or handicap rules to the Protest Committee when filing the protest.

17 MEDIATION

- 17.1 This section changes rule 63.1.
- 17.2 For protests under a rule of Part 2 or Rule 31 where there is no damage, and in which there are no more than two boats involved, there may be a short mediation hearing. Any protest not resolved by this process will be referred to the Protest Committee for a full hearing.
- 17.3 After the Protest has been properly filed as in SI 16.3, one designated representative from each boat shall testify before a mediator. No witnesses will be permitted.
- 17.4 The mediator will decide whether
- (a) in their opinion, one or both boats broke a rule. The representative of a boat that in the opinion of the mediator broke a rule may accept a scoring penalty as in SI 14.2. If all penalties are accepted, the mediator will allow the protest to be withdrawn.

(b) in their opinion, neither boat broke a rule. If the representatives agree, the mediator will allow the protest to be withdrawn. If either representative disagrees, the protest will go to the protest committee for a hearing.

OR (c) the protest will be referred to the protest committee for a full hearing.

17.5 When a protest is withdrawn, it will not be reopened or made the subject of a request for redress.

17.6 The mediator may attend the full hearing.

17.7 Mediation hearings may be held prior to the expiry of protest time provided all parties are present and agree.

18 SCORING

18.1 The Regatta will be scored as a single series with one race required to be completed to constitute a series. All races in the Regatta will count. This changes rule A2.

18.2 A boat that did not finish shall be awarded points for the finishing place one more than the number of finishers for that race. This changes rule A4.2

19 SAFETY REGULATIONS

19.1 Once a boat has fulfilled her check-in requirements, if she withdraws from a race or if she no longer intends to participate in racing, she shall: a) keep clear of other competitors, b) wear her Ensign and c) notify the Race Committee and receive their acknowledgement either orally or on the applicable VHF channel. The Protest Committee may make the disqualification DNE for a breach of this instruction.

20 REPLACEMENT OF CREW OR EQUIPMENT

20.1 Unless prohibited by class rules and as long as minimum crew requirements are met, crew changes between races will be allowed.

20.2 Unless prohibited by class rules, substitution of damaged or lost equipment will be allowed.

21 EQUIPMENT AND MEASUREMENT CHECKS

21.1 A boat or equipment may be inspected at any time for compliance with the class rules and sailing instructions. On the water, a boat can be instructed by the race committee to proceed immediately to a designated area for inspection.

22 HAUL-OUT RESTRICTIONS

22.1 Keelboats shall not be hauled out during the regatta except with and according to the terms of written permission of the race committee or protest committee.

23 RADIO COMMUNICATION

23.1 See the applicable attachment for the VHF Channel to be used for each course.

23.2 Race Committee broadcasts regarding its intentions, the course to be sailed, start times, course changes, etc. are a courtesy only. Failure of the Race Committee to make a broadcast, the timing of a broadcast, or the failure of a boat to hear a broadcast shall not be grounds for redress. This changes rule 60.1(b).

23.3 When the Race Committee or protest committee intends to protest a boat the Race Committee may notify the boat after the race on the listed VHF channel for the course. All boats should monitor the listed VHF channel for one half hour after the last finish of the last race of the day. Failure of a boat to receive such radio notification shall not be grounds for redress. This changes Rule 60.1 (b) & 61.1(b).

24 PRIZES

24.1 Prizes will be awarded to the three top finishers in each class after racing Sunday, except that prizes may not be awarded to boats which are not represented at the prize-giving ceremonies.

25 DISCLAIMER OF LIABILITY

25.1 Sailing is an activity that has an inherent risk of damage or injury. Competitors in this regatta are participating entirely at their own risk. See rule 4, Decision to Race. The race organizers (organizing authority, race committee, protest committee, host club, sponsors, or any other organization or official) will not be responsible for damage to any boat or other property or injury to any competitor, including death, sustained as a result of participation in this event. By participating in this event, each competitor agrees to release the race organizers from any and all liability associated with such competitor's participation in the event to the fullest extent permitted by law.

26 INSURANCE

26.1 Liability coverage in accordance with the Notice of Race is required.

Attachment A

CS INVESTMENT COUNSEL COURSE

1. SCHEDULE

For IRC-1 and IRC-2 there will be a maximum of 7 races, with a maximum of 4 races on Saturday and 3 races on Sunday. For the 8 metre class, there will be a maximum of 5 races, with a maximum of 3 races on Saturday and 2 races on Sunday.

2. RACING AREA

The racing area is centred on a point at 43° 35.8' N 79° 17.2' W or approximately 3.7 nm from ABYC on a bearing of 175°

3. SIGNAL BOAT

The signal boat for this course will display code flag A. This may be removed just prior to the first race of the day.

4. CLASS FLAGS

Class	Class Flag
IRC-1	Numeral Pennant "1"
IRC-2	Numeral Pennant "2"
8 Metre	Numeral Pennant "3"

5. ORDER OF START

The order of start for the first race each day will be as follows. Subsequent races will be started as soon as practicable.

	Classes
Start 1	IRC-1
Start 2	IRC-2
Start 3	8 metre

6. RADIO COMMUNICATIONS

The applicable VHF channel for this course is 72

7. MARKS

Marks will be inflatables with colours as shown below. New marks, as provided in instruction 10.2, will be YELLOW inflatables.

8. THE COURSE

8.1 The courses will be as shown in the diagrams on the next page. The compass bearing and distance to mark 1 will be displayed on the signal vessel before the warning signal. Marks will be rounded as follows:

IRC-1 and IRC-2

Marks	Rounded to	Colour
Start	N/A	Orange
1B, 2B	Port	Orange
3S, 3P	Gate	Orange
1B, 2B	Port	Orange
Finish	N/A	Orange

8 metre

Marks	Rounded to	Colour
Start	N/A	Orange
1A, 2A	Port	Green
3S, 3P	Gate	Orange
1B, 2B	Port	Orange
Finish	N/A	Orange

8.2 If code flag G is displayed on the signal boat before its warning signal, the 8 metre class shall sail the same course as IRC-1 and IRC-2.

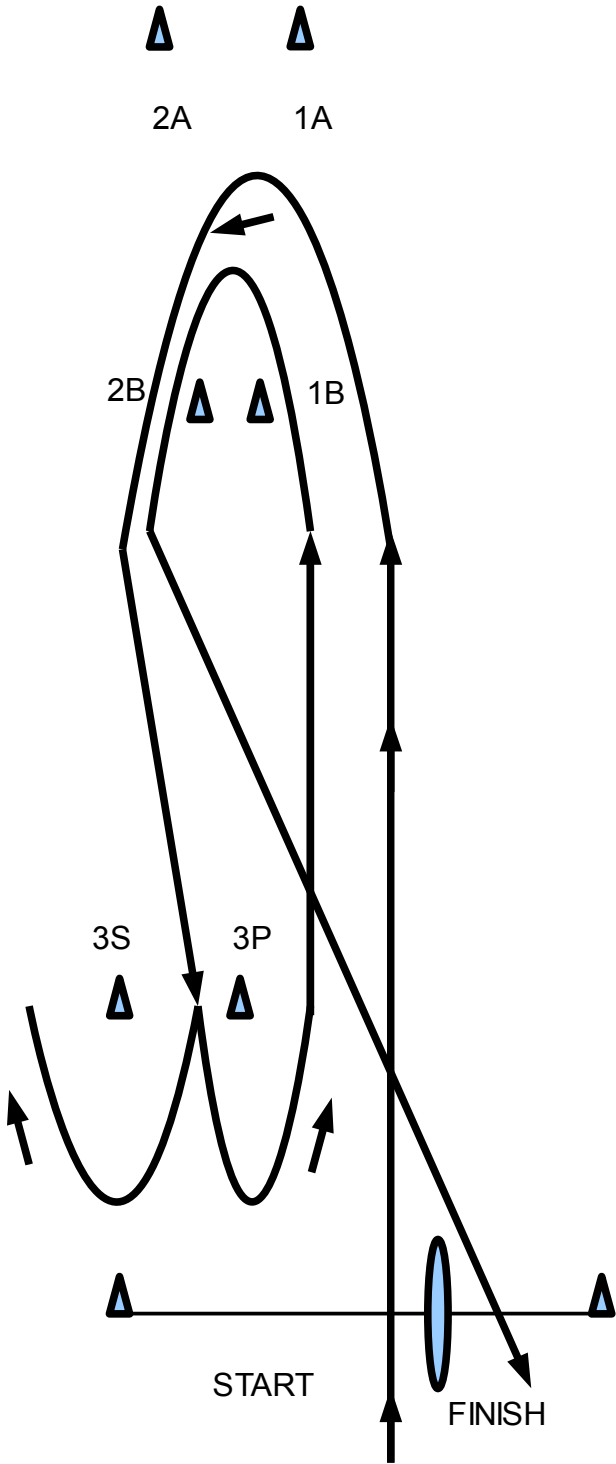
8.3 If one of the gate marks (3S or 3P) is missing, the remaining mark will be rounded to port.

8.4 If either the windward or offset mark is missing (one of 1A and 2A, or one of 1B and 2B), the remaining mark will be rounded to port and the next leg will be directly to the gate or the finish, as appropriate.

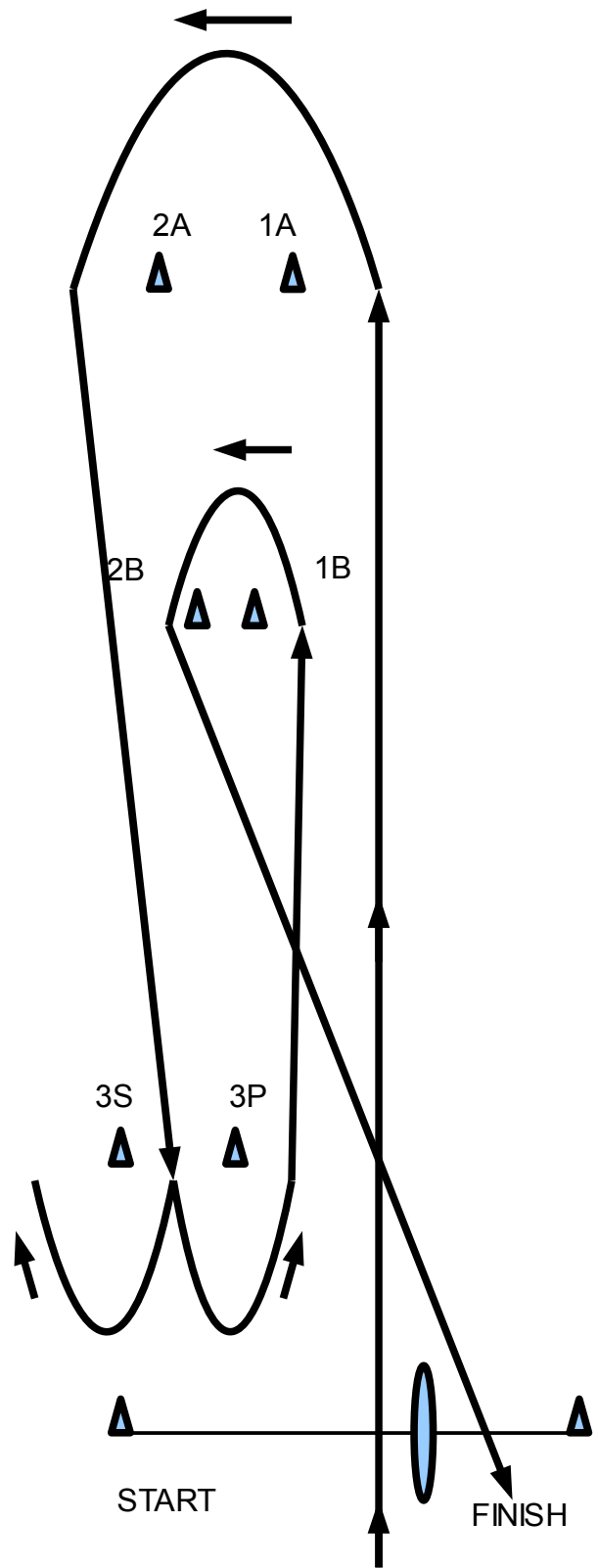
8.5 Marks 3S and 3P are not marks of the course on the first and last legs of the race.

8.6 Boats in the 8 metre class shall not pass between marks 1B and 2B on the first or second legs of the race.

Course diagram – IRC-1 and IRC-2



Course diagram – 8 metre



Attachment B

BENETEAU COURSE

1. SCHEDULE

The regatta will consist of a maximum of 7 races. There will be a maximum of 4 races on Saturday and 3 on Sunday.

2. RACING AREA

The racing area is centred on a point at 43° 37.4' N 79° 14.7' W, approximately 3.4 nm from ABYC on a bearing of 135°.

3. SIGNAL BOAT

The signal boat for this course will display code flag B. This may be removed just prior to the first race of the day.

4. CLASS FLAGS & ORDER OF START

Class flags will be as shown in the table below. The order of start for the first race of the day will be as shown in the table. Subsequent races will be started as soon as practicable.

Start	Class	Class Flag
1	Beneteau 36.7	Numeral Pennant "1"
2	J105	Numeral Pennant "2"
3	C&C 99	Numeral Pennant "3"

5. RADIO COMMUNICATIONS

The applicable VHF channel for this course is 09.

6. MARKS

Marks will be YELLOW inflatables. New marks, as provided in instruction 10.2, will be ORANGE inflatables.

7. THE COURSE

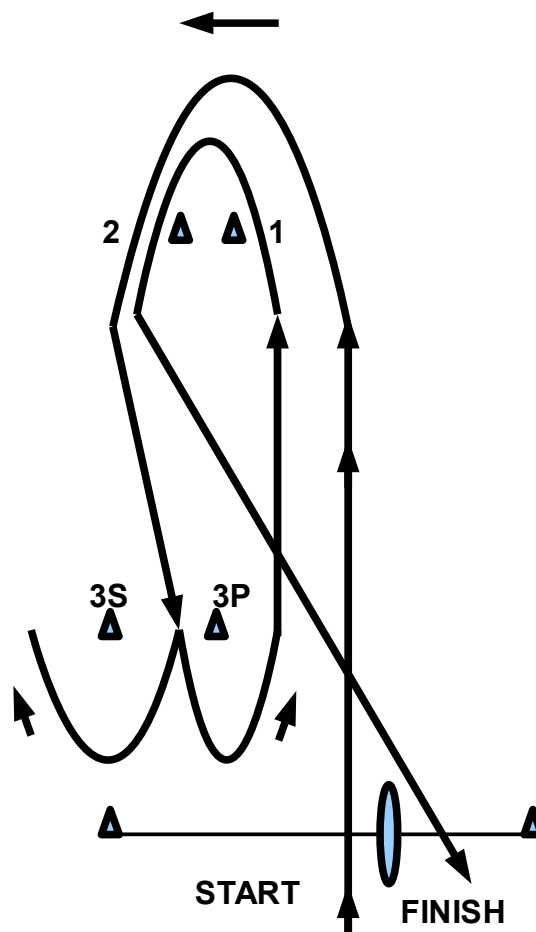
7.1 The course will be as shown in the diagram. The compass bearing and distance to mark 1 will be displayed on the signal boat before the warning signal. Marks are to be rounded as follows:

Marks	Rounded to
Start	N/A
1,2	Port
3S, 3P	Gate
1,2	Port
Finish	N/A

7.2 If one of the gate marks (3S or 3P) is missing, the remaining mark will be rounded to port.

7.3 If either the windward mark (1) or the offset mark (2) is missing, the remaining mark will be rounded to port and the next leg will be directly to the gate or the finish, as appropriate.

7.4 Marks 3S & 3P are not marks of the course for the first and last legs of the race.



Attachment C

SKIPPERS' PLAN COURSE

1. SCHEDULE

The Regatta will consist of a maximum of 7 races.
There will be a maximum of 4 races on Saturday and 3 on Sunday.

2. RACING AREA

The starting area is centred on a point at 43° 38.2' N 79° 17.4' W or approximately 1.7 nm from ABYC on a heading of 150°.

3. SIGNAL BOAT

The signal boat for this course will display SIGNAL BOAT code flag C. This will be removed just prior to the first race of the day.

4. CLASS FLAGS, SCHEDULE, ORDER OF START

Class flags will be as shown in the table below.

Class	Class Flag
J/24	Numeral Pennant "1" or J-24 flag
Thunderbird	Numeral Pennant "2" or Thunderbird flag

On SATURDAY, the first warning signal for the Thunderbird class will be at 1050, and the first warning signal for the J-24 class will be at 1230. On SUNDAY, the first warning signal for the J-24 class will be at 1050 and the first warning signal for the Thunderbirds will follow. Subsequent races will be started as soon as practicable.

On Saturday, no warning signal will be made for the J-24 class after 1630 on Saturday and after 1530 on Sunday. For Thunderbirds, no warning signal will be made after 1530 on either day.

5. RADIO COMMUNICATIONS

The applicable VHF channel for this course is 71

6. MARKS

Original marks will be **ORANGE** inflatables. New marks, as provided in instruction 10.2, will be **YELLOW** inflatables

7. THE COURSE

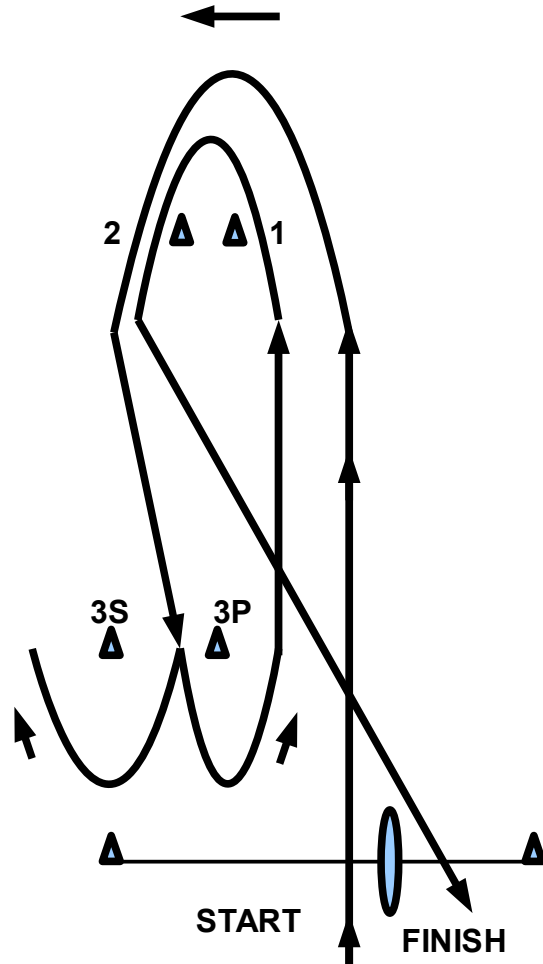
7.1 The course will be as shown the diagram below. The compass bearing and distance to mark 1 will be displayed on the signal vessel before the warning signal. Marks are to be rounded as follows:

Marks	Rounded to
Start	N/A
1,2	Port
3S, 3P	Gate
1,2	Port
Finish	N/A

7.2 If one of the gate marks (3S or 3P) is missing, the remaining mark will be rounded to port.

7.3 If either the windward mark (1) or the offset mark (2) is missing, the remaining mark will be rounded to port and the next leg will be directly to the gate or the finish, as appropriate.

7.4 Marks 3S & 3P are not marks of the course for the first and last legs of the race.



Attachment D

BRISTOL MARINE COURSE

1. SCHEDULE

The regatta will consist of a maximum of 7 races. There will be a maximum of 4 races on Saturday and 3 on Sunday.

2. RACING AREA

The starting area is centred on a point at 43° 39.3' N 79° 15.6' W or approximately 2.2 nm from ABYC on a bearing of 100°.

3. SIGNAL BOAT

The signal boat for this course will display code flag D. This may be removed just prior to the first race of the day.

4. CLASS FLAGS & ORDER OF START

Class flags will be as shown in the table below. The order of start for the first race of the day will be as shown in the table. Subsequent races will be started as soon as practicable.

Start	Class	Class Flag
1	Etchell	Numeral Pennant "1"
2	Viper 640	Numeral Pennant "2"
3	IRC-3	Numeral Pennant "3"
4	IRC-4	Numeral pennant "4"

IRC-4 may be started with IRC-3 at the discretion of the race committee.

5. RADIO COMMUNICATIONS

The applicable VHF channel for this course is 73.

6. MARKS

Marks will be **YELLOW** inflatables. New marks, as provided in instruction 10.2, will be **ORANGE or GREEN** inflatables.

7. THE COURSE

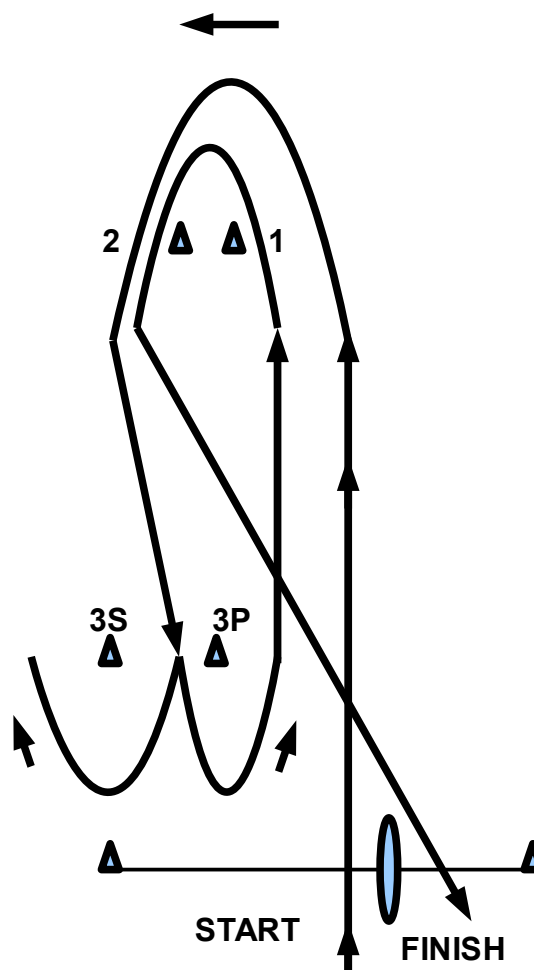
7.1 The course will be as shown in the diagram. The compass bearing and distance to mark 1 will be displayed on the signal boat before the warning signal. Marks are to be rounded as follows:

Marks	Rounded to
Start	N/A
1,2	Port
3S, 3P	Gate
1,2	Port
Finish	N/A

7.2 If one of the gate marks (3S or 3P) is missing, the remaining mark will be rounded to port.

7.3 If either the windward mark (1) or the offset mark (2) is missing, the remaining mark will be rounded to port and the next leg will be directly to the gate or the finish, as appropriate.

7.4 Marks 3S & 3P are not marks of the course for the first and last legs of the race.



Attachment E

ABYC COURSE

1. SCHEDULE

There will be no maximum number of races.

2. RACING AREA

The starting area is located close inshore to the south of the club.

3. SIGNAL BOAT

The signal boat for this course will display code flag E. This may be removed just prior to the first race of the day.

4. CLASS FLAGS AND ORDER OF START

Start	Class	Class Flag
Class 1	Martin 16	Numerical Pennant "1"

5. RADIO COMMUNICATIONS

The applicable VHF channel for this course is 68.

6. MARKS

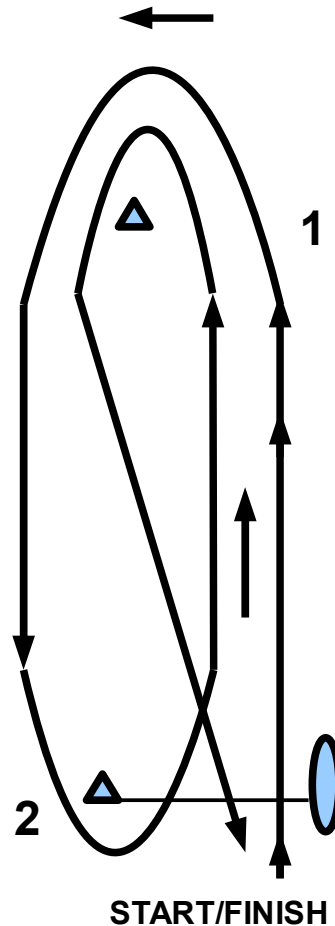
Marks will be inflatable cylinders of the same colour. New marks, as provided in instruction 10.2, will be a different colour.

7. THE COURSE

The compass bearing and distance to mark 1 will be displayed on the signal vessel before the warning signal. Marks are to be rounded as follows:

Marks	Rounded to
Start	N/A
1	Port
2	Port
1	Port
Finish	N/A

Course diagram



**ABYC REGATTA
ASHBRIDGE'S BAY YACHT CLUB
MAY 26-27, 2012**

**J/24 ONTARIO DISTRICT STANDARD SAILING INSTRUCTIONS
APPENDIX A**

Title	The ABYC Regatta is organized by the Lake Ontario Racing Council (LORC), Ashbridge's Bay Yacht Club, and (for J/24 races) the Ontario District J/24 Class Association.
2	The Official Notice Board is located on the upper floor of the Clubhouse.
4	The Official Flagstaff is located to the west of the Clubhouse.
4.1	The warning signal will be made not less than 30 minutes after Flag 'AP' has been lowered ashore.
5	This instruction is changed as given below.
6	The racing area is centred on a point at 43° 38.2' N 79° 17.4' W, or approximately 1.7 nm from ABYC on a bearing of 150°.
8, 10, & 13	Original Marks will be ORANGE inflatables. The change of course marks will be YELLOW inflatables. The Start and Finish Marks will be Poles displaying a Red Flag or inflatable marks.
11, & 20	The Race Committee will monitor / transmit on VHF Channel 71.
14 & 15	The Protest Desk will be located in the ground level lobby of the Clubhouse.
15 & 17	On Sunday, the Protest Time limit will be one and one-half hours after the last boat finishes the last race of the day, expiry of the time limit for the last race of the day, or abandonment of racing for the day, whichever is applicable. The exact time will be posted on the Official Notice Board. On Saturday, the Protest Time Limit will be one hour.

The J/24 Ontario District Standard Sailing Instructions are amended as follows:

Replace instruction 5 (Schedule of Races) by:

5 CLASS FLAGS, SCHEDULE OF RACES, AND ORDER OF START

5.1 The J-24 class will share a course with the Thunderbird class. The Thunderbird class is sailing under the ABYC Regatta Sailing Instructions. Class flags will be as follows

Classes	Class Flag
J/24	Numeral Pennant "1" or J-24 flag
Thunderbird	Numeral Pennant "2" or Thunderbird flag

5.2 On Saturday the first warning signal for the Thunderbird class will be at 1050 and the first warning signal for the J-24 class will be at 1230. On Sunday, the first warning signal for the J-24 class will be at 1050 and the first warning signal for the Thunderbirds will follow. Subsequent races will follow as soon as practicable.

5.3 For the J-24 class, no warning signal will be made after 1630 on Saturday and after 1530 on Sunday. No warning signal will be made for the Thunderbirds after 1530 on either day.

Instruction 12 (time limit) is amended by replacing "The overall time limit is 2 hours" by "The overall time limit is 90 minutes".

Add instruction 16.6: Mediation hearings may be held prior to the protest time limit if all parties are present and agree.

Instruction 19 is changed by replacing 1000 hrs by 1140 hrs

(continued on next page)

Instruction 7 (the Course) is replaced by:

7.1 The course will be as shown in the diagram. The compass bearing and distance to mark 1 will be displayed on the signal boat before the warning signal. Marks are to be rounded as follows:

Marks	Rounded to
Start	N/A
1,2	Port
3S, 3P	Gate
1,2	Port
Finish	N/A

7.2 If one of the gate marks (3S or 3P) is missing, the remaining mark will be rounded to port.

7.3 If either the windward mark (1) or the offset mark (2) is missing, the remaining mark will be rounded to port and the next leg will be directly to the gate or the finish, as appropriate.

7.4 Marks 3S & 3P are not marks of the course for the first and last legs of the race.

